

Mahana Homes LLC

Handcrafted, Island Inspired Timber
& Cedar Kit homes & guesthouses.
www.vervedesignbuild.com



MAHANA
homes

EXPERIENCE THE ESSENCE OF ISLAND LIVING



Experience the island magic that is the heart of Hawaii... Come home to a custom-crafted Mahana Home.

Whether building a new home or guesthouse on your property Mahana Homes has designed and assembled a distinctive kit timber home solution with the look and quality materials of a custom home at a fraction of the cost. The result is a turn-key solution that stays within your budget and is delivered on a dependable schedule.

Fusing ancient traditions with the comforts and energy efficiency of modern technology, a Mahana home reflects conscious green living principles and pride of ownership. A Mahana home is for those that above all else value excellent design and quality materials.

Through its thoughtful craftsmanship each Mahana home is an intimate and harmonious encounter with its natural environment. Drawing its architectural influences from Polynesian design and the country houses of 16th century Japan, a Mahana home will envelop your senses with its timeless simplicity and inherent warmth.

Building your dream home in Hawaii has never been easier. From creative concept to the timely delivery of quality building materials, we will assist you in a way that makes building your new Mahana home a no-headache process. The bottom line is you get to stay focused on your dream, while we stay focused on delivering all the details to your jobsite. We ship direct to all Hawaii ports so whether you live on the Big Island, Maui, Oahu or Kauai, your new Mahana home will be at home in its setting.

GREEN ISLAND LIVING

Your new Mahana Home is engineered for green living principles by the design of the home. An efficient, small home creates a small footprint on the surrounding environment. Window orientation and overhangs take advantage of winter sun and summer shade. Window placement also creates excellent ventilation and airflow providing natural cooling and prevention of molds.

Our timbers, cedar ceilings and lumber packages are cut from responsibly managed forests by companies committed long term to having a renewable resource and low impact on the environment.

Solar panels or tankless on demand systems are used on our homes for heating water causing much less need for dependence on fossil fuels when combined with Energy Star Appliances and low flow plumbing fixtures.

Both indoor and outdoor lighting feature LED technology.

Water catchment and purification systems are easily integrated allowing you to harvest rainwater.



THE PROCESS

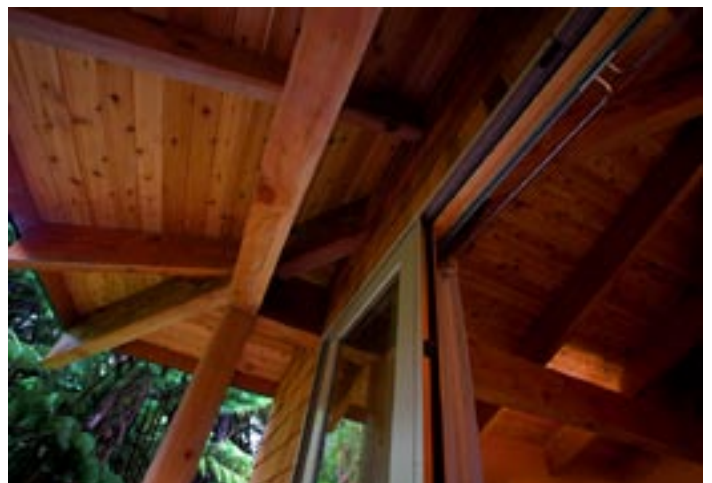
The Mahana building system is based on a pre engineered beam and cedar ceiling structure. We work closely with a licensed architect familiar with our building process to create a home that is structurally engineered to withstand Hawaii's codes for earthquakes or hurricanes, yet still expresses nature in design. We have several ready made plans to choose from, that are adaptable for most building sites, or you can have a complete custom home designed for your particular locale.

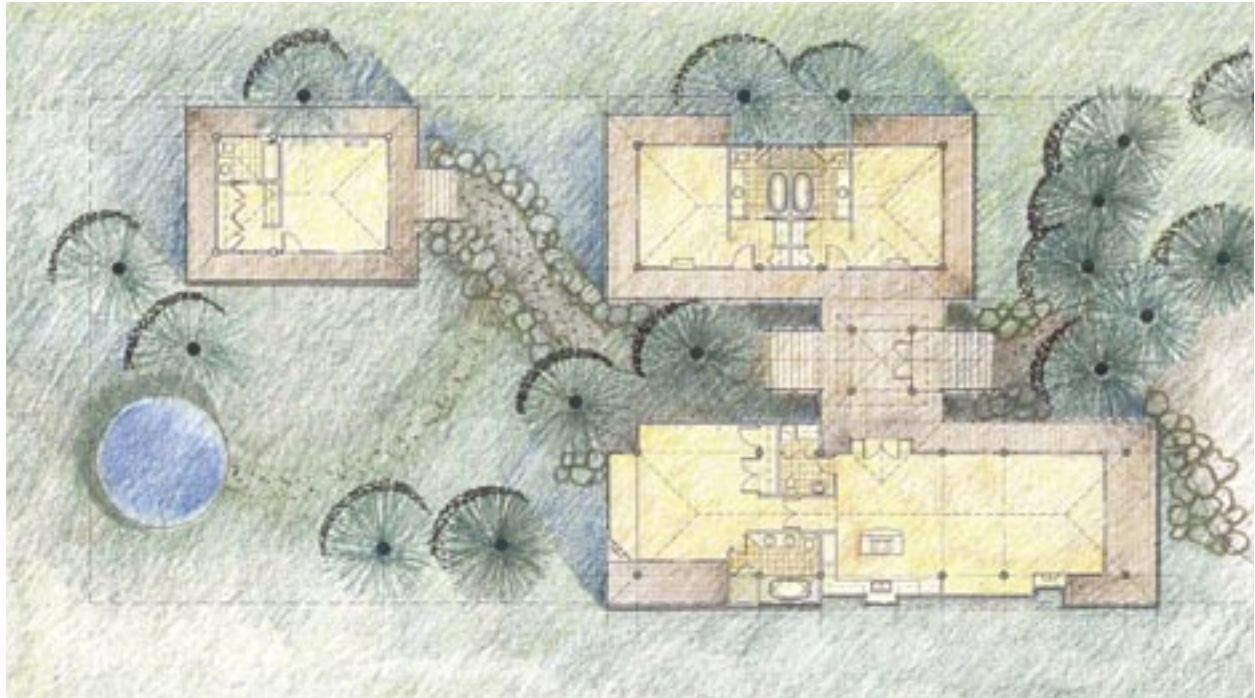


Melanie can assist you in siting your new home on your lot once you are ready to begin the design process. Once the design phase is complete, the plans are ready to submit for contractor bids to finish and building permits. Milling of your beams can now begin.



Your new timber Kit home is pre-engineered and milled in British Columbia from select Douglas fir and Cedar, then shipped to Hawaii by ocean container. Everything from , pre cut beams, tongue and groove cedar roof decking, Hibor treated framing lumber doors,, cedar shingles or siding, window packages, and even appliances and furniture if desired, will arrive ready for fast and easy assembly by yourself or your contractor. Detailed blueprints and labeled materials save time and money on the jobsite.





MATERIALS SUPPLIED BY **MAHANA HOMES** INCLUDE THE FOLLOWING:

- | | |
|---|---|
| _Architect stamped, county approved blueprints | _Cedar Deck and railing deck railing |
| _Septic and Water Engineered plans. | _T & G Cedar roof decking |
| _Assembly blueprints and manual | _Cedar shingles or exterior Plywood |
| _Milled to specification Douglas Fir beams. | _Plan for steel roofing |
| _Hibor treated structural lumber for floors and walls | _List of required steel strapping, bolts etc. |

THERMAL WINDOW AND ENTRY DOOR **PACKAGE**

To be Supplied by Buyer

(please consult with us if you need assistance in locating materials.
Mahana Homes has a preferred vendor list available)

- | | |
|---|-----------------------------|
| _Foundation concrete or piers | _Floor coverings\Fireplaces |
| _Plumbing labor and fixtures | _Heating or cooling |
| _Electrical labor and fixtures | _Skylights |
| _Drywall (cedar interior paneling package available) | _Insulation |
| _Kitchen Cabinets | _Hardware |
| _Roofing | _Appliances |
| _Water catchment system | |



ABOUT US

MAHANA HOMES is a collaboration of Hawaii resident and designer Melanie Boudar and Peter Fluker, owner of Verve Design+ Build of Whistler, BC Canada. Peter has been designing and building homes for over 30 years. His work has been featured in the Mother Earth News and Western Interiors. Mahana Homes has been featured in Hawaiian Style Magazine for At the Craters Edge, a luxury lodging property in Volcano, Hawaii.

A tour of this property is available by appointment.



Come home to a place of beauty that is expressive and unique as you are, a Mahana Home that will inspire the memories your family will treasure for a lifetime.

Isn't it time you experienced island living the way it was meant to be?

For more information **please contact:**

PH: Melanie Boudar /Hawaii 808-557-5358

PH: Peter Fluker/Canada-604-938-9885
Or (808) 557-5359